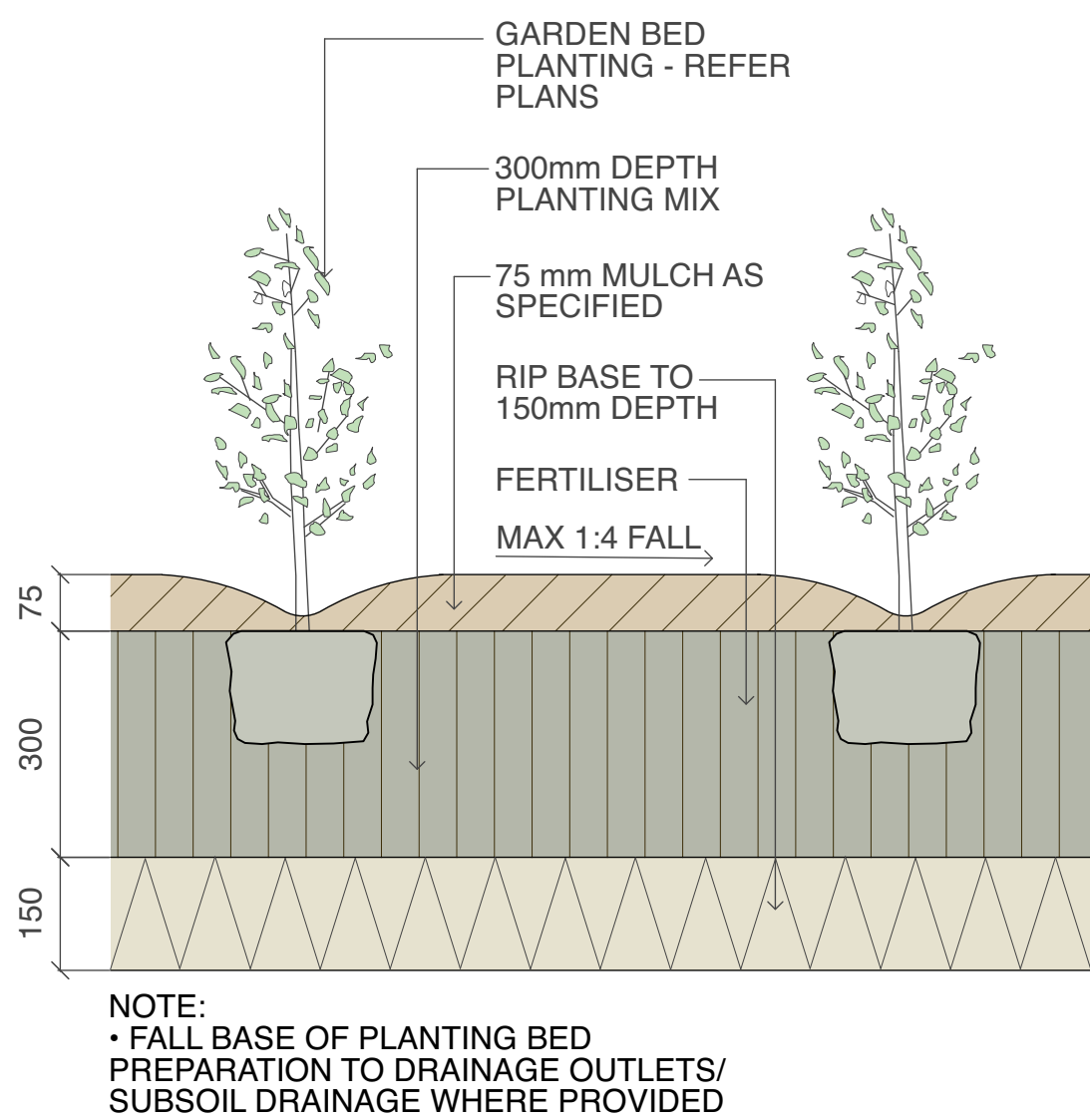
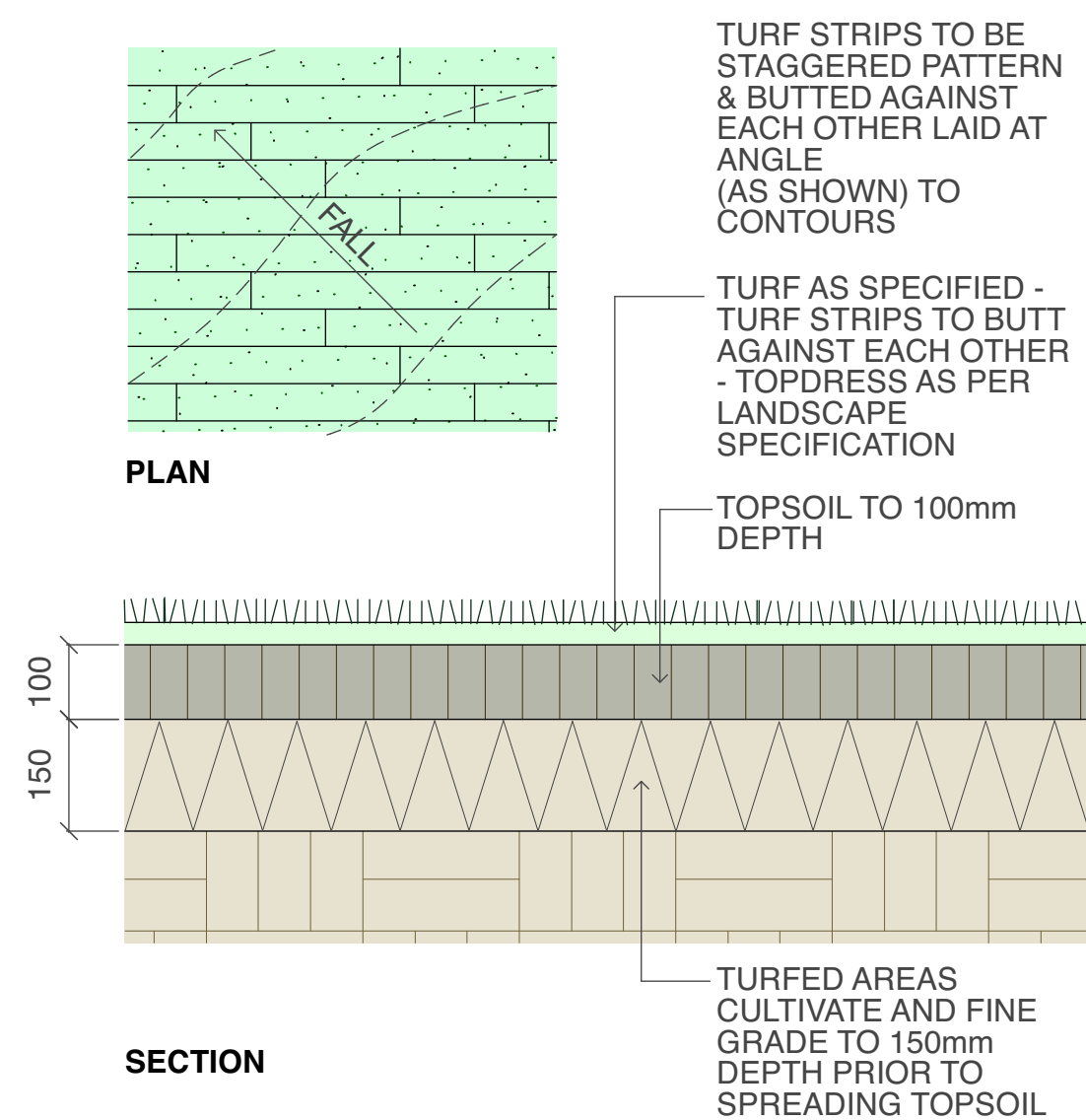


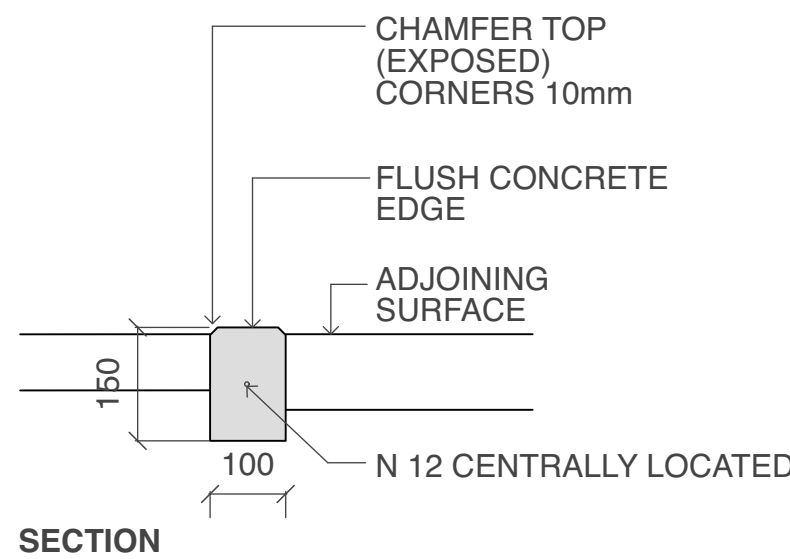
1 75 Litre Tree Planting  
scale 1:25



2 Planting Bed Detail  
scale 1:10



3 Turfing  
scale as shown



4 Concrete Edge  
scale 1:10

Plant Schedule							
ID	Qty	Common Name	Botanical Name	Size	Mature Height	Mature Spread	Native (N)
<b>Trees</b>							
TAC	2	Smooth-barked Apple	Angophora costata	75Litre	15 - 20m	6 - 10m	N
TBM	2	Grey Myrtle	Backhousia myrtifolia	75Litre	5 - 8m	3.5 - 6m	N
TCK	3	Bottlebrush	Callistemon 'Kings Park Special'	75Litre	3 - 6m	2.0 - 3.5m	N
TMD	2	White Feather Honeymyrtle	Melaleuca decora	75Litre	8 - 10m	5 - 8m	N
TTL	2	Water Gum	Tristanopsis laurina 'Luscious'	75Litre	4 - 5m	3.5 - 6m	N
TWF	4	Weeping Lilly Pilly	Waterhousia floribunda	75Litre	6 - 8m	3.5 - 6m	N
<b>Shrubs</b>							
SAC	65	Green Mist	Acacia cognata 'Green Mist'	200mm	1.0 - 1.5m	0.8 - 1.0m	N
SAH	6	Dwarf Lilly Pilly	Acmena 'Hedge Master'	200mm	0.8 - 1.0m	0.8 - 1.0m	N
SCAL	111	Little John	Callistemon 'Little John'	200mm	0.9 - 1.5m	0.9 - 1.2m	N
SCCW	32	White Bottle Brush	Callistemon citrinus 'White Anzac'	200mm	0.9 - 1.1m	2.0 - 3.0m	N
SCE	12	Scarlet Bottlebrush	Callistemon citrinus 'Endeavour'	200mm	3 - 5m	2.0 - 3.5m	N
SCE	37	Evening Glow Mirror Plant	Coprosma 'Evening Glow'	200mm	0.9 - 1.5m	0.9 - 1.2m	N
SCG	24	Bottle Brush	Callistemon 'Great Balls of Fire'	200mm	1 - 1.2m	2.0 - 3.5m	N
SCRA	9	Red Alert Bottle Brush	Callistemon 'Red Alert'	200mm	1.2 - 1.5m	2.0 - 3.0m	N
SCS	32	Narrow Palm Lily	Cordylina stricta congesta	200mm	1 - 2m	0.8 - 1.0m	N
SDE	27	Gynea Lily	Doryanthes excelsa	200mm	1.2 - 2m	1.2 - 2.0m	N
SGH	11	Grevillea	Grevillea 'Honey Gem'	200mm	1.5 - 3m	1.2 - 2.0m	N
SSY	34	Cascade Lilly Pilly	Syzygium 'Cascade'	200mm	2 - 3m	1.2 - 2.0m	N
SSY	15	Royal Flame Lilly Pilly	Syzygium 'Royal Flame'	200mm	2 - 4m	1.2 - 2.0m	N
SWB	99	Blue Gem	Westringia 'Blue Gem'	200mm	0.8 - 1.0m	0.9 - 1.2m	N
<b>Ground Covers</b>							
GSB	32	Lamb's Ear	Stachys byzantina	150mm	0.0 - 0.3m	0.3 - 0.6m	N
MyoYar	26	Carpet Spreading Myoporum	Myoporum parvifolium 'Yareena'	150mm	0.05 - 0.1m	0.8 - 1.0m	N
GDB	161	Flax Lily	Dianella tasmanica 'Blaze'	150mm	0.4 - 0.5m	0.4 - 0.6m	N
GDT	161	Flax Lily	Dianella tasmanica 'Tasred'	150mm	0.6 - 0.7m	0.4 - 0.6m	N
GLT	265	Spiny-headed mat rush	Lomandra longifolia 'Tanika'	150mm	0.45 - 0.6m	0.6 - 0.9m	N
GWM	60	Mundi	Westringia fruticosa 'Mundi'	150mm	0.45 - 0.6m	0.9 - 1.2m	N
GMV	334	Carpet Spreading Myoporum	Myoporum parvifolium 'Yareena'	150mm	0.45 - 0.6m	0.9 - 1.2m	N
BG	37	Giant Candle	Banksia 'Birthday Candle'	150mm	0.45 - 0.6m	0.9 - 1.2m	N

#### SPECIFICATION NOTES

##### PLANTING MATERIALS

###### Planting Mix:

Planting mix for tree pit backfill shall be "Organic Garden Mix" consisting of  
50% Black Soil  
20% Coarse Sand  
30% Organic Material

as available from Australian Native Landscapes, Phone: [02] 9450 1444, or approved equivalent. Samples shall be provided to the Superintendent prior to ordering or delivery to site. Any material delivered to site, that is rejected by the Superintendent, shall be removed by the contractor at his own expense. Minimum depths of mix to all planting bed areas is as specified on details.

###### Mulch:

###### Mulch to garden bed:

Mulch shall mean Hort-Bark (15mm grade), free from material derived from Privet, Willow, Poplar, Coral trees, or other noxious weeds. Any mulch exceeding the 25mm grade shall be rejected / removed from the site. Graded pine bark mulch (ANL code MHB) to be supplied by Australian Native Landscapes Pty Ltd Phone (02) 9450 1444, or approved equivalent.

Spread mulch so that after settling, it is:

- smooth and evenly graded between design surface levels;
- flush with adjacent finished levels;
- of the required depths (75mm); and
- sloped towards the base of plant stems in plantation beds, but not in contact with the stem (not closer than 50mm in the case of gravel mulches).

Place after the preparation of the planting bed, planting and all other work.

###### Plant Material:

All plant material must be true to the species. No substitutes will be allowed. All plants shall be free of fungus and insect damage. All plants shall be healthy, well shaped, not soft or force grown and not root bound.

###### Tured areas:

All new turfed areas are to be selected weed free Soft Leaf Buffalo. Turf shall be laid neatly butted with staggered joins, flush with adjacent surfaces and have even running falls to all drainage points.

All new turfed area shall have a minimum 150mm depth of weed free top soil, placed and levelled prior to turfing.

#### PREPARATION AND HARDWORKS

##### Excavating for Spot Planting

To planting areas, excavate a hole for each plant large enough to provide not less than twice the depth and twice the diameter than the root ball of species to be planted.

###### Staking

Use durable hardwood, straight, free from knots or twists, pointed at one end. Drive stakes into the ground a minimum one third of their length, avoiding damage to the root system.

- 75 Litre trees in 2 x 38x38x1800mm Hardwood Stake with double Nylon tie
- TIES: Provide a 50mm wide Nylon webbing tie per stake, fixed securely to the stakes, one tie at half the height of the main stem and the other as necessary to stabilise the plant.

###### Concrete Edge

MATERIALS: Concrete to be off white colour.

INSTALLATION: Supply and install 150 x 100mm (width) reinforced flush concrete kerb to locations as approved on site by the Principle's Authorised Person. Provide flexible joints at maximum 3 metre intervals in colour to match concrete. Lightly expose aggregate through rinsing / sponging. Tool finish exposed edges with 10mm pencil round to prevent chipping.

###### Porous Pavement

MATERIAL: Porous pavement shall be 115x230x80mm porous paving installed to manufacturers recommendations and specifications as available from Boral Pty Ltd (Ph 1300 134 002) or approved equivalent. Sample to be provided for approval by Superintendent.

#### MAINTENANCE / PLANT ESTABLISHMENT

Maintenance shall apply to all hard and soft landscape materials installed prior to the "handover" and acceptance by Principle's Authorised Person. The maintenance period shall convenience at the granting of completion and shall extend for 26 weeks. Contractor shall submit a maintenance programme and maintain a maintenance log.

Maintenance shall consist of the following works:

- Follow a daily watering programme to be approved by Principle's Authorised Person. Water all plants individually, twice per week or when necessary to ensure constant plant growth. Water all turf and native grassed areas, twice per week.
- Apply appropriate weed control sprays and hand weed as required to maintain planting areas, native grassing bed areas, turfed areas, paved areas, and tree pits in turf free of weed or rogue grass growth.
- Regularly tidy and top up mulch and trim edges to prevent spill over onto paved / grassed areas.
- Spray to control pests and diseases.
- Replace plants, which fail with plants of a similar size and quality as originally specified to approval of Authorised Person. Costs of replacement shall be the responsibility of the Contractor. Replacement planting will be undertaken within 2 weeks of identification of dead material or instruction be the Authorised Person.
- Report any incidence of plants stolen or destroyed by vandalism.
- Adjust stakes and ties to plants as necessary. Ensure that strangulation of plants does not occur.
- Prune and shape plants as directed or where necessary.
- Make good any defects or faults arising out of defective workmanship or materials.
- Fertilise lawn areas to maintain healthy growth.
- Make good any erosion or soil subsidence, which may occur including soft areas in pathways.
- Mow lawn to maintain neat healthy growth.
- A final inspection shall be made by the Authorised Person before handover. Any items requiring rectification shall be repaired before the works are finally approved, and retention moneys released.

#### NOTE:

- All finished levels are to be verified by Contractor on site.
- All landscape works be in strict accordance with Council's landscape code and guidelines
- This plan to be used in conjunction with all other submitted architectural, hydraulics and engineering drawing where applicable.



LOCKED BAG 5022  
PARRAMATTA NSW 2124  
PHONE No 1800 738 718  
https://www.dpie.nsw.gov.au/land-and-housing-corporation

NOMINATED ARCHITECT:

Barry Rush & Associates Pty Ltd

Architects  
Suite 25A, 2 Beattie Street, Balmmain, NSW, 2041  
Phone: (612) 9555 8028 Fax: (612) 9810 0161  
Email: info@barryrush.com.au  
www.barryrush.com.au

PROJECT MANAGER  
LAND & HOUSING CORPORATION  
PH (02) 8753 8000 FAX (02) 8753 8888

STRUCTURAL CONSULTANT

MECHANICAL CONSULTANT

HYDRAULIC CONSULTANT

ELECTRICAL CONSULTANT

LANDSCAPE CONSULTANT  
GREENLAND DESIGN PTY LTD  
PH 0403 164 198

PROJECT:

SENIOR LIVINGS

HOUSING DEVELOPMENT

NO. 98-102 ALBERT STREET

REVESBY  
LOTS 38,39 & 40 IN SECT 13 DP 2343

TITLE:

LANDSCAPE DETAILS  
& SPECIFICATION

FILE: BGGXT\_LA01.DWG

PLOTTED:  
29/02/2024 4:20 PM

STATUS: PART 5 - STAGE 1

DATE: 29/02/24

SCALE: full size @A1

PROJ: -

PROJECT NO: BGGXT

STAGE: PART 5

DRAWN: CL

CHECKED: GD

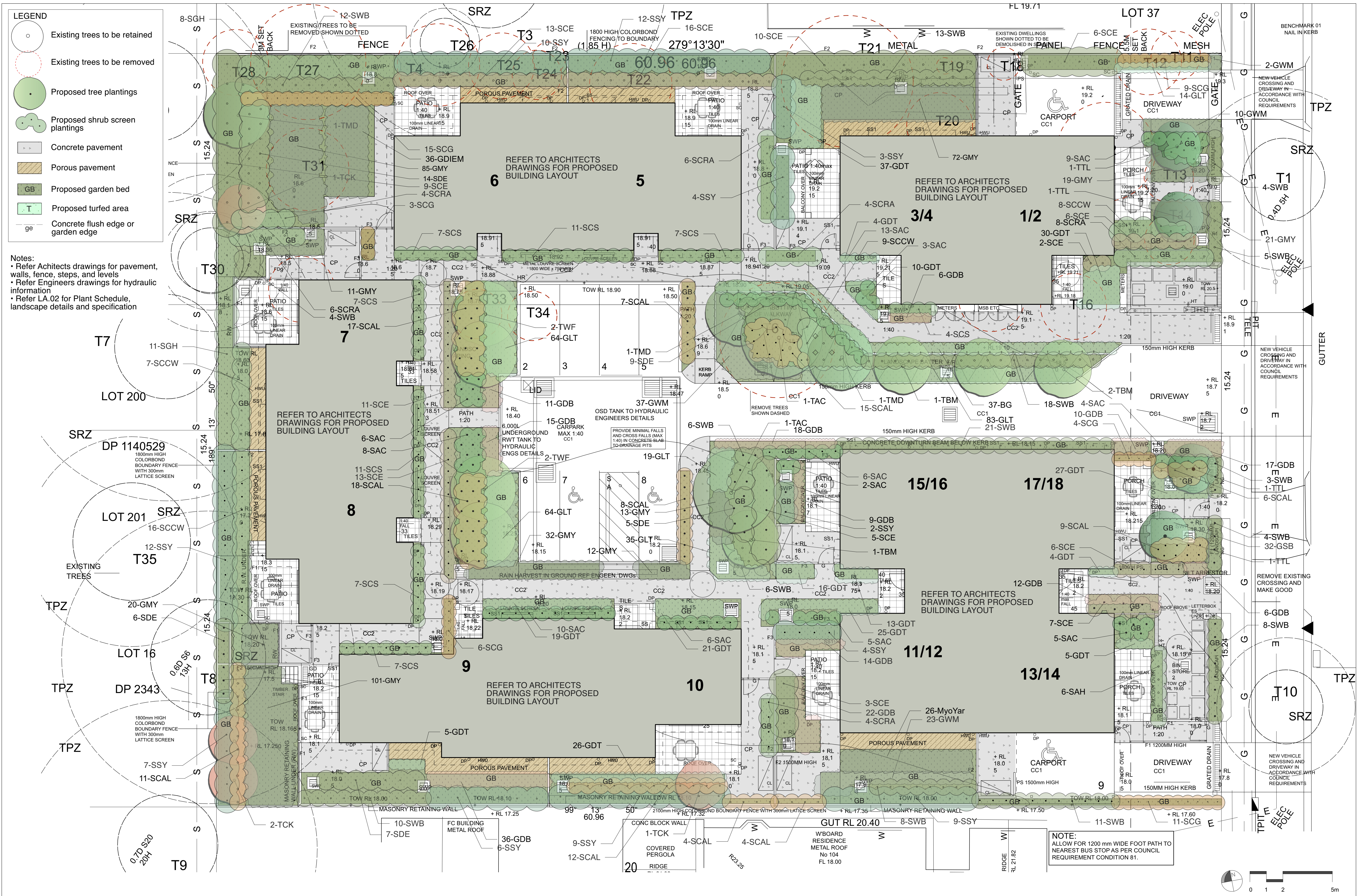
LANDSCAPE ARCH

TYPE: LA

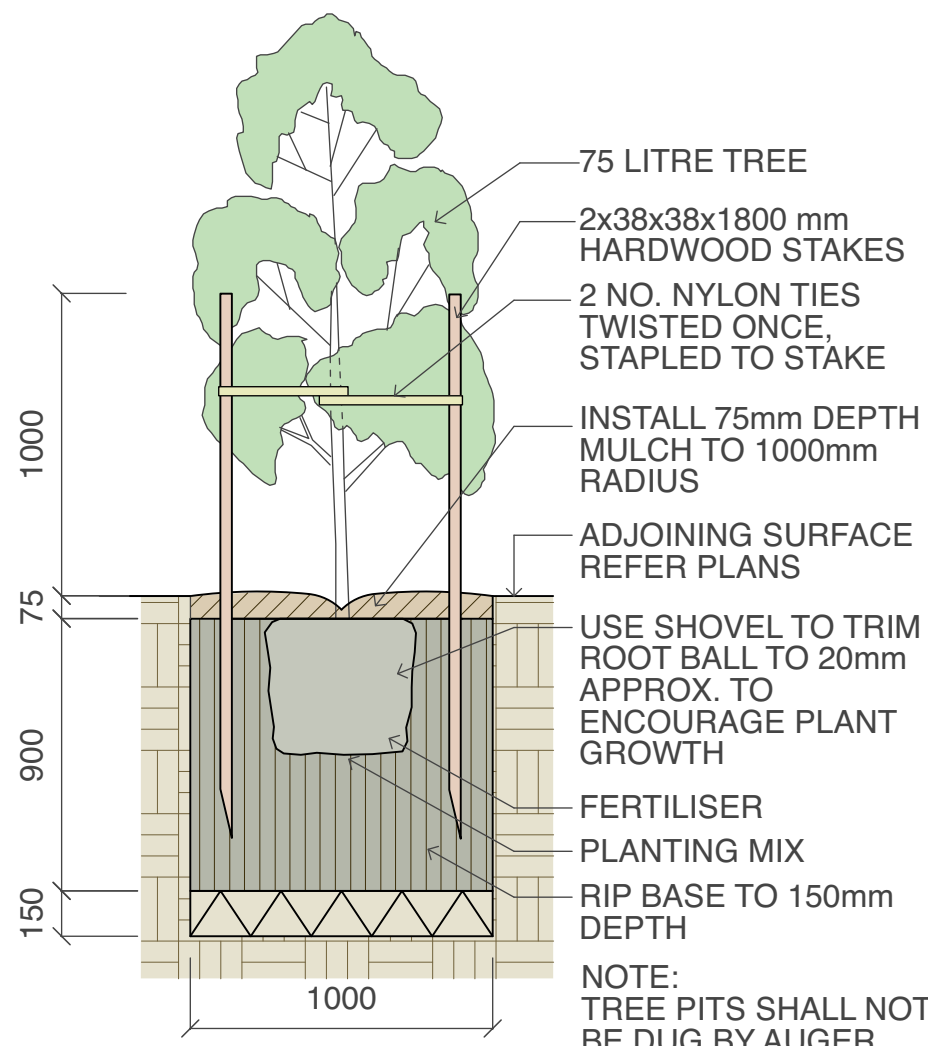
SHEET: LA02

REV: 1

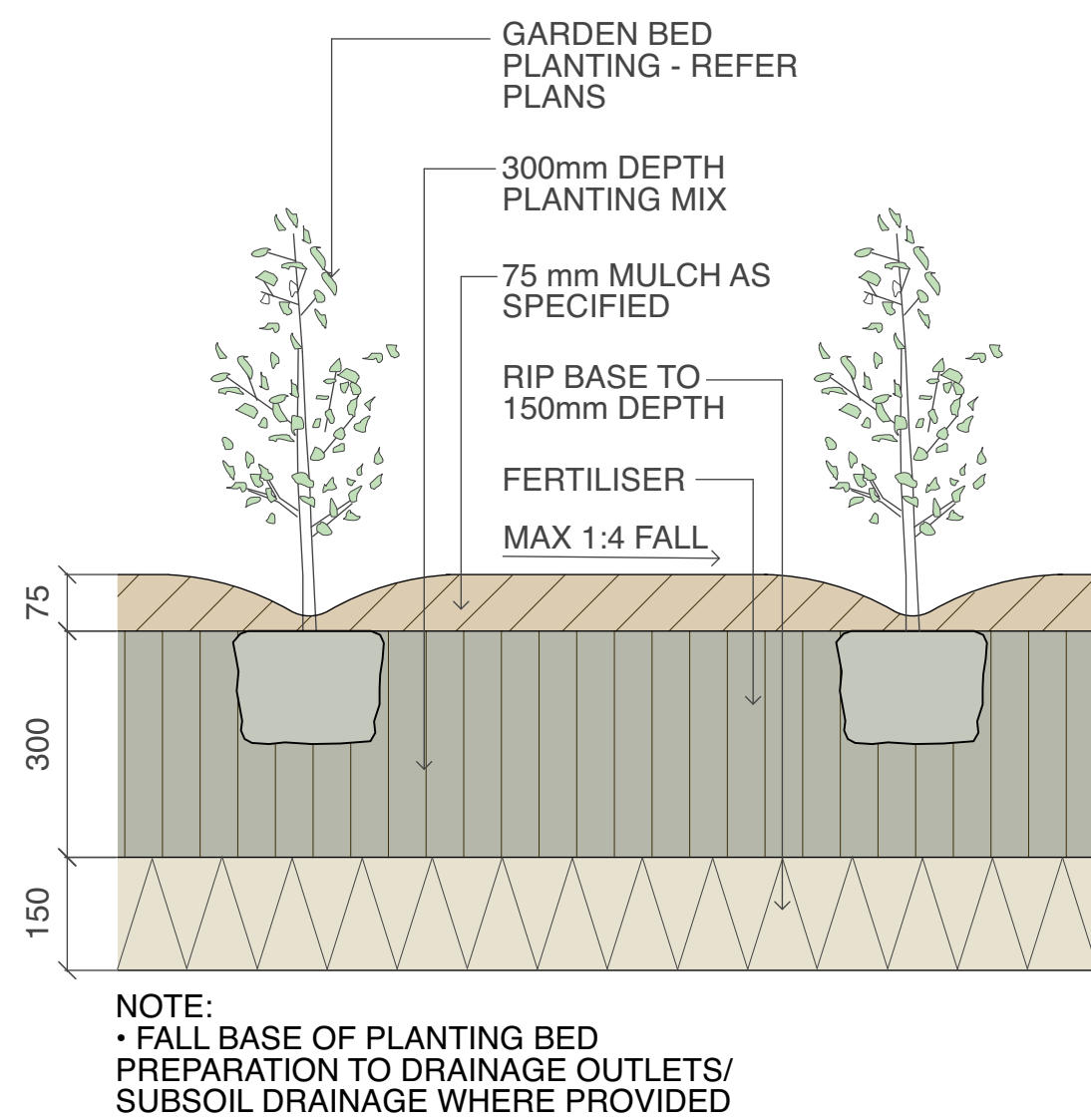




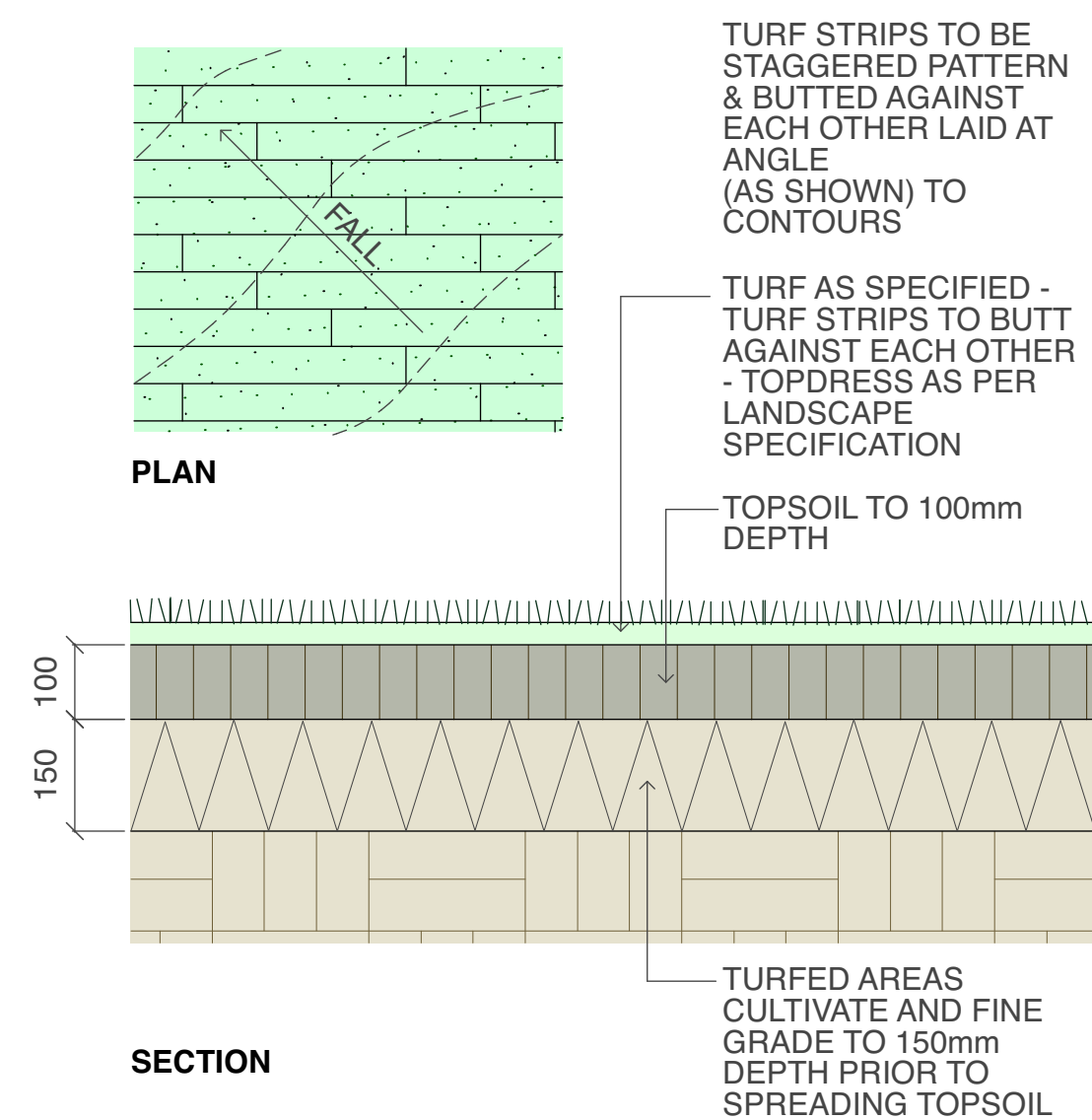




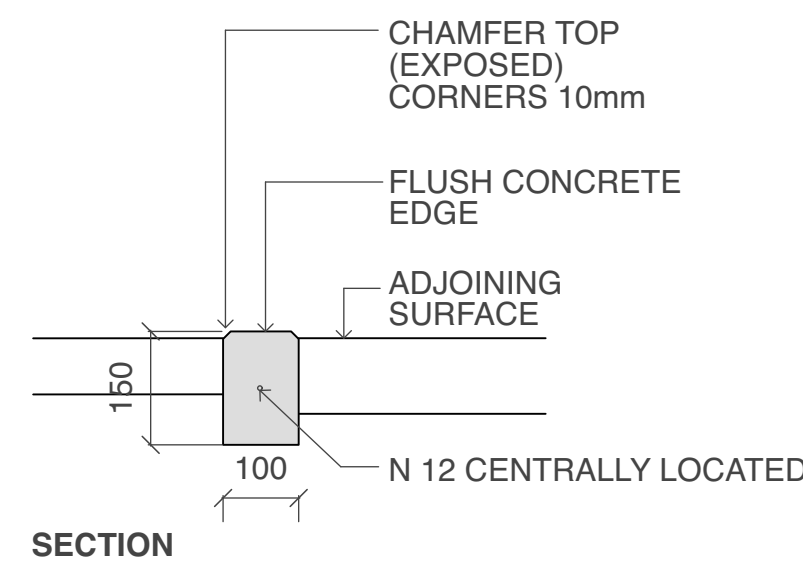
1 75 Litre Tree Planting  
scale 1:25



2 Planting Bed Detail  
scale 1:10



3 Turfing  
scale as shown



4 Concrete Edge  
scale 1:10

Plant Schedule							
ID	Qty	Common Name	Botanical Name	Size	Mature Height	Mature Spread	Native (N)
<b>Trees</b>							
TAC	2	Smooth-barked Apple	Angophora costata	75Litre	15 - 20m	6 - 10m	N
TBM	2	Grey Myrtle	Backhousia myrtifolia	75Litre	5 - 8m	3.5 - 6m	N
TCK	4	Bottlebrush	Callistemon 'Kings Park Special'	75Litre	3 - 6m	2.0 - 3.5m	N
TMD	3	White Feather Honeymyrtle	Melaleuca decora	75Litre	8 - 10m	5 - 8m	N
TTL	4	Water Gum	Tristanopsis laurina 'Luscious'	75Litre	4 - 5m	3.5 - 6m	N
TWF	4	Weeping Lilly Pilly	Waterhousia floribunda	75Litre	6 - 8m	3.5 - 6m	N
<b>Shrubs</b>							
SAC	77	Green Mist	Acacia cognata 'Green Mist'	200mm	1.0 - 1.5m	0.8 - 1.0m	N
SAH	6	Dwarf Lilly Pilly	Acmena 'Hedge Master'	200mm	0.8 - 1.0m	0.8 - 1.0m	N
SCAL	111	Little John	Callistemon 'Little John'	200mm	0.9 - 1.5m	0.9 - 1.2m	N
SCCW	40	White Bottle Brush	Callistemon citrinus 'White Anzac'	200mm	0.9 - 1.1m	2.0 - 3.0m	N
SCE	37	Scarlet Bottlebrush	Callistemon citrinus 'Endevour'	200mm	3 - 5m	2.0 - 3.5m	N
SCE	74	Evening Glow Mirror Plant	Coprosma 'Evening Glow'	200mm	0.9 - 1.5m	0.9 - 1.2m	N
SCG	48	Bottle Brush	Callistemon 'Great Balls of Fire'	200mm	1 - 1.2m	2.0 - 3.5m	N
SCRA	32	Red Alert Bottle Brush	Callistemon 'Red Alert'	200mm	1.2 - 1.5m	2.0 - 3.0m	N
SCS	61	Narrow Palm Lily	Cordylina stricta congesta	200mm	1 - 2m	0.8 - 1.0m	N
SDE	41	Gynea Lily	Doryanthes excelsa	200mm	1.2 - 2m	1.2 - 2.0m	N
SGH	19	Grevillea	Grevillea 'Honey Gem'	200mm	1.5 - 3m	1.2 - 2.0m	N
SSY	63	Cascade Lilly Pilly	Syzygium 'Cascade'	200mm	2 - 3m	1.2 - 2.0m	N
SSY	15	Royal Flame Lilly Pilly	Syzygium 'Royal Flame'	200mm	2 - 4m	1.2 - 2.0m	N
SWB	133	Blue Gem	Westringia 'Blue Gem'	200mm	0.8 - 1.0m	0.9 - 1.2m	N
<b>Ground Covers</b>							
GSB	32	Lamb's Ear	Stachys byzantina	150mm	0.0 - 0.3m	0.3 - 0.6m	N
MyoYar	26	Carpet Spreading Myoporum	Myoporum parvifolium 'Yareena'	150mm	0.05 - 0.1m	0.8 - 1.0m	N
GDIEM	36	Emerald Falls Dichondra	Dichondra 'Emerald Falls'	150mm	0.0 - 0.3m	0.9 - 1.2m	N
GDB	176	Flax Lily	Dianella tasmanica 'Blaze'	150mm	0.4 - 0.5m	0.4 - 0.6m	N
GDT	242	Flax Lily	Dianella tasmanica 'Tasred'	150mm	0.6 - 0.7m	0.4 - 0.6m	N
GLT	279	Spiny-headed mat rush	Lomandra longifolia 'Tanika'	150mm	0.45 - 0.6m	0.6 - 0.9m	N
GWM	72	Mundi	Westringia fruticosa 'Mundi'	150mm	0.45 - 0.6m	0.9 - 1.2m	N
GMV	386	Carpet Spreading Myoporum	Myoporum parvifolium 'Yareena'	150mm	0.45 - 0.6m	0.9 - 1.2m	N
BG	37	Giant Candle	Banksia 'Birthday Candle'	150mm	0.45 - 0.6m	0.9 - 1.2m	N

#### SPECIFICATION NOTES

##### PLANTING MATERIALS

###### Planting Mix:

Planting mix for tree pit backfill shall be "Organic Garden Mix" consisting of  
50% Black Soil  
20% Coarse Sand  
30% Organic Material

as available from Australian Native Landscapes, Phone: [02] 9450 1444, or approved equivalent. Samples shall be provided to the Superintendent prior to ordering or delivery to site. Any material delivered to site, that is rejected by the Superintendent, shall be removed by the contractor at his own expense. Minimum depths of mix to all planting bed areas is as specified on details.

###### Mulch:

Mulch to garden bed:

Mulch shall mean Hort-Bark (15mm grade), free from material derived from Privet, Willow, Poplar, Coral trees, or other noxious weeds. Any mulch exceeding the 25mm grade shall be rejected / removed from the site. Graded pine bark mulch (ANL code MHB) to be supplied by Australian Native Landscapes Pty Ltd Phone (02) 9450 1444, or approved equivalent.

Spread mulch so that after settling, it is:

- smooth and evenly graded between design surface levels;
- flush with adjacent finished levels;
- of the required depths (75mm); and
- sloped towards the base of plant stems in plantation beds, but not in contact with the stem (not closer than 50mm in the case of gravel mulches).

Place after the preparation of the planting bed, planting and all other work.

###### Plant Material:

All plant material must be true to the species. No substitutes will be allowed. All plants shall be free of fungus and insect damage. All plants shall be healthy, well shaped, not soft or force grown and not root bound.

###### Tured areas:

All new turfed areas are to be selected weed free Soft Leaf Buffalo. Turf shall be laid neatly butted with staggered joins, flush with adjacent surfaces and have even running falls to all drainage points.

All new turfed area shall have a minimum 150mm depth of weed free top soil, placed and levelled prior to turfing.

#### PREPARATION AND HARDWORKS

##### Excavating for Spot Planting

To planting areas, excavate a hole for each plant large enough to provide not less than twice the depth and twice the diameter than the root ball of species to be planted.

###### Staking

Use durable hardwood, straight, free from knots or twists, pointed at one end. Drive stakes into the ground a minimum one third of their length, avoiding damage to the root system.

- 75 Litre trees in 2 x 38x38x1800mm Hardwood Stake with double Nylon tie
- TIES: Provide a 50mm wide Nylon webbing tie per stake, fixed securely to the stakes, one tie at half the height of the main stem and the other as necessary to stabilise the plant.

###### Concrete Edge

MATERIALS: Concrete to be off white colour.

INSTALLATION: Supply and install 150 x 100mm (width) reinforced flush concrete kerb to locations as approved on site by the Principle's Authorised Person. Provide flexible joints at maximum 3 metre intervals in colour to match concrete. Lightly expose aggregate through rinsing / sponging. Tool finish exposed edges with 10mm pencil round to prevent chipping.

###### Porous Pavement

MATERIAL: Porous pavement shall be 115x230x80mm porous paving installed to manufacturers recommendations and specifications as available from Boral Pty Ltd (Ph 1300 134 002) or approved equivalent. Sample to be provided for approval by Superintendent.

#### MAINTENANCE / PLANT ESTABLISHMENT

Maintenance shall apply to all hard and soft landscape materials installed prior to the "handover" and acceptance by Principle's Authorised Person. The maintenance period shall convenience at the granting of completion and shall extend for 26 weeks. Contractor shall submit a maintenance programme and maintain a maintenance log.

Maintenance shall consist of the following works:

- Follow a daily watering programme to be approved by Principle's Authorised Person. Water all plants individually, twice per week or when necessary to ensure constant plant growth. Water all turf and native grassed areas, twice per week.
- Apply appropriate weed control sprays and hand weed as required to maintain planting areas, native grassing bed areas, turfed areas, paved areas, and tree pits in turf free of weed or rogue grass growth.
- Regularly tidy and top up mulch and trim edges to prevent spill over onto paved / grassed areas.
- Spray to control pests and diseases.
- Replace plants, which fail with plants of a similar size and quality as originally specified to approval of Authorised Person. Costs of replacement shall be the responsibility of the Contractor. Replacement planting will be undertaken within 2 weeks of identification of dead material or instruction be the Authorised Person.
- Report any incidence of plants stolen or destroyed by vandalism.
- Adjust stakes and ties to plants as necessary. Ensure that strangulation of plants does not occur.
- Prune and shape plants as directed or where necessary.
- Make good any defects or faults arising out of defective workmanship or materials.
- Fertilise lawn areas to maintain healthy growth.
- Make good any erosion or soil subsidence, which may occur including soft areas in pathways.
- Mow lawn to maintain neat healthy growth.
- A final inspection shall be made by the Authorised Person before handover. Any items requiring rectification shall be repaired before the works are finally approved, and retention moneys released.

###### NOTE:

- All finished levels are to be verified by Contractor on site.
- All landscape works be in strict accordance with Council's landscape code and guidelines
- This plan to be used in conjunction with all other submitted architectural, hydraulics and engineering drawing where applicable.



LOCKED BAG 5022  
PARRAMATTA NSW 2124  
PHONE No 1800 738 718  
https://www.dpie.nsw.gov.au/land-and-housing-corporation

NOMINATED ARCHITECT:

Barry Rush & Associates Pty Ltd

Architects  
Suite 25A, 2 Beattie Street, Balmmain, NSW, 2041  
Phone: (612) 9555 8028 Fax: (612) 9810 0161  
Email: info@barryrush.com.au  
www.barryrush.com.au

PROJECT MANAGER  
LAND & HOUSING CORPORATION  
PH (02) 8753 8000 FAX (02) 8753 8888

STRUCTURAL CONSULTANT

MECHANICAL CONSULTANT

HYDRAULIC CONSULTANT

ELECTRICAL CONSULTANT

LANDSCAPE CONSULTANT  
GREENLAND DESIGN PTY LTD  
PH 0403 164 198

PROJECT:

SENIOR LIVINGS  
HOUSING DEVELOPMENT  
NO. 98-102 ALBERT STREET  
REVESBY  
LOTS 38,39 & 40 IN SECT 13 DP 2343

TITLE:

LANDSCAPE DETAILS  
& SPECIFICATION

FILE: BGGXT\_LA01.DWG

PLOTTED:  
29/02/2024 4:20 PM

STATUS: PART 5 - STAGE 2

DATE: 29/02/24 SCALE: full size @A1 PROJ: - PROJECT NO: BGGXT  
SHEET: PART 5 DRAWN: CL CHECKED: GD  
LANDSCAPE ARCH

TYPE: LA SHEET: LA02

REV: 1